

CENTRAL INTERCEPTOR BULLETIN

Mt Albert War Memorial Reserve site

Wairere Avenue, Mt Albert

The Central Interceptor is New Zealand's largest-ever wastewater tunnelling project. We're boring a 4.5m-wide tunnel some 14.7km from Watercare's Māngere Wastewater Treatment Plant to Grey Lynn. When it rains heavily, stormwater can combine with wastewater and overwhelm our pipes, overflowing together into our creeks and streams. When completed, the Central Interceptor will significantly reduce these overflows into our central Auckland waterways.

About our Mount Albert site

The next construction site to open is our Mt Albert War Memorial Reserve site which is situated in the lower carpark. We will be excavating a 32m deep shaft at this site and will launch our micro tunnel boring (mTBM) from here to our Norgrove Avenue site.

This is the start of our Link Sewer B, an offshoot from the main CI tunnel. Link Sewer B includes sites at Norgrove Avenue and Rawalpindi Reserve. Because construction work can be noisy, we will be erecting a noise reduction hangar on the site once tunnelling begins.

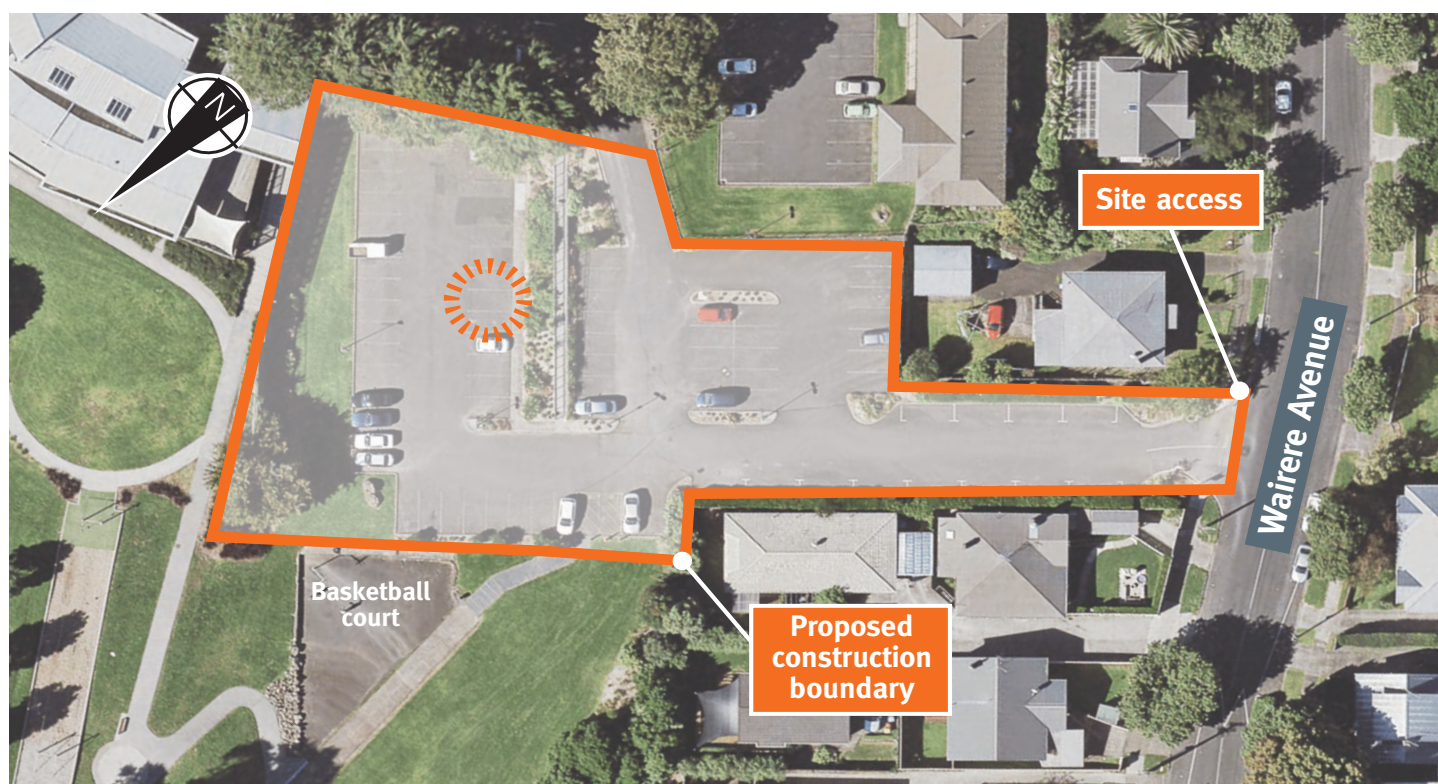
We will also use the Mt Albert site to inspect our main tunnel boring machine, Hiwa-i-te-rangi, as she passes by on her way to our Western Springs site.

What you will notice

Site set up is due to start in late May 2022 and we will be in the lower carpark for about two years. The first thing you will notice is our fencing which will go up as site preparations and clearing starts. We will be working with Auckland Transport to improve traffic calming devices in Wairere Avenue so that we can make moving past our site safer for cars and pedestrians. You will receive notification of any works prior to installation.

2023 will be a busy year on the site as we complete our shaft drilling and start construction on a series of chambers and sewer connections into the Central Interceptor.

Many different activities take place during construction and the site may appear busier at times with less activity and fewer staff at other times. Traffic management staff may be needed on site to ensure the safety of pedestrians and truck movements. At times, their activities can be limited if there are no traffic movements, but they still must remain near the site for safety.





Setting the scene

We have worked with the Albert Eden Local Board and Auckland Council Community Facilities team to relocate as much vegetation from our site as we can to another part of the park. We removed flax emerald gem, flax evening glow, dieties grandiflora, phormium 'dark delight' and hebe wiri mist. Most of this vegetation has been successfully replanted in the Reserve. These needed to be moved during summer to give them a better chance of survival.

Working with you

We understand that construction sites for major projects such as the Central Interceptor can be disruptive and noisy at times.

We aim to be a good neighbour while working in your area and will work to minimise disruption, where we can. We will keep you informed with what is happening with regular communications. We will be out and about in the neighbourhood during the works to keep in contact about how the work is progressing. Our contractor will hold a 'Meet the Contractor' community event to tell you all about the project (details below). This is dependent on COVID-19 health and safety protocols.

How will construction affect you?

- Our general work hours are between 7am to 6pm, Monday to Friday, and 8am to 6pm on Saturdays. There may be times when unexpected ground conditions or certain activities, such as critical concrete pours, may require us to work past the general work hours. This will comply with Auckland Council's permit rules.
- As we are occupying the lower carpark, those spaces are no longer available to the public. Please see the new signage for where to park or use public transport for your visit.
- There will be no-parking lines on either side of the entrance to the Reserve on both sides of Wairere Avenue due to heavy vehicle turning radius.
- All our construction vehicles will enter and exit the site from the New North Road end of Wairere Avenue.
- Heavy vehicle movement will be restricted from 8:15am to 9:15am and 2.45pm to 3:15pm, Monday to Friday, during school and college term times. We will have traffic management staff on site managing truck movements and watching out for pedestrians.

Meet the Contractor

Where: Lower Carpark, Mount Albert War Memorial Reserve, entrance off Wairere Avenue

When: Saturday 18 June 2022

Time: 11am to 2pm

We would like to invite you to join us for a sausage sizzle so that you can meet our contractor, Ghella Abergeldie Joint Venture. This is your opportunity to come and find out more about the project, how we will work with you while we are in your neighbourhood. You can discuss the Mount Albert site construction activities and explore our interactive Discovery Centre.



Any questions?

For up to date information please see our website:

 www.centralinterceptor.co.nz

You can also email us at:

 ciproject@ga-jv.com

Or phone:

 0800 GAJV 02 (0800425802)

Follow us:

 @gajv_nz

 @GAJV



We encourage you to receive these updates electronically - send us your email, your current mailing address and quote "Sign me up: Mt Albert site bulletin" to ciproject@water.co.nz